



October 2008

A Biometric Approach to Aesthetic Crown Lengthening: Part II—Interdental Considerations

Stephen J. Chu, DMD, MSD, CDT* • Mark N. Hochman, DDS† • Paul Fletcher, DDS‡

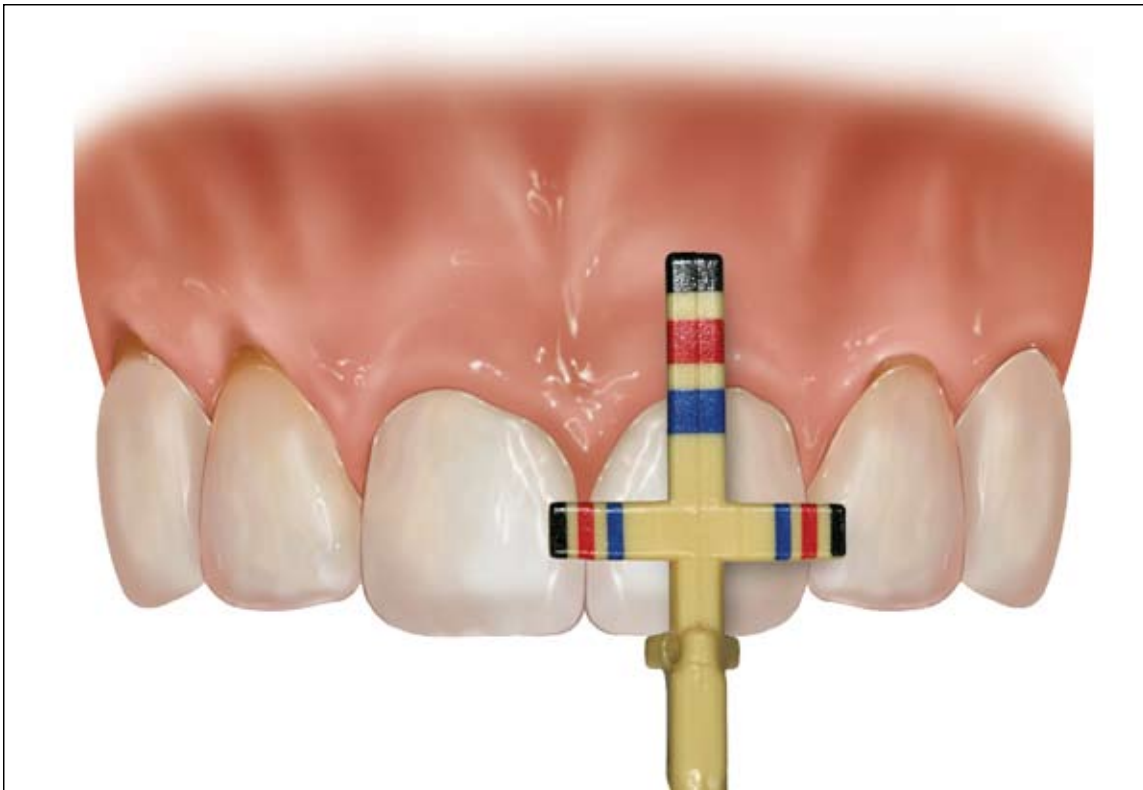


Figure A. Diagrammatic representation of the T-Bar proportion gauge designed for simultaneous width/length measurements of maxillary anterior teeth within a range of small to X-large tooth dimensions.

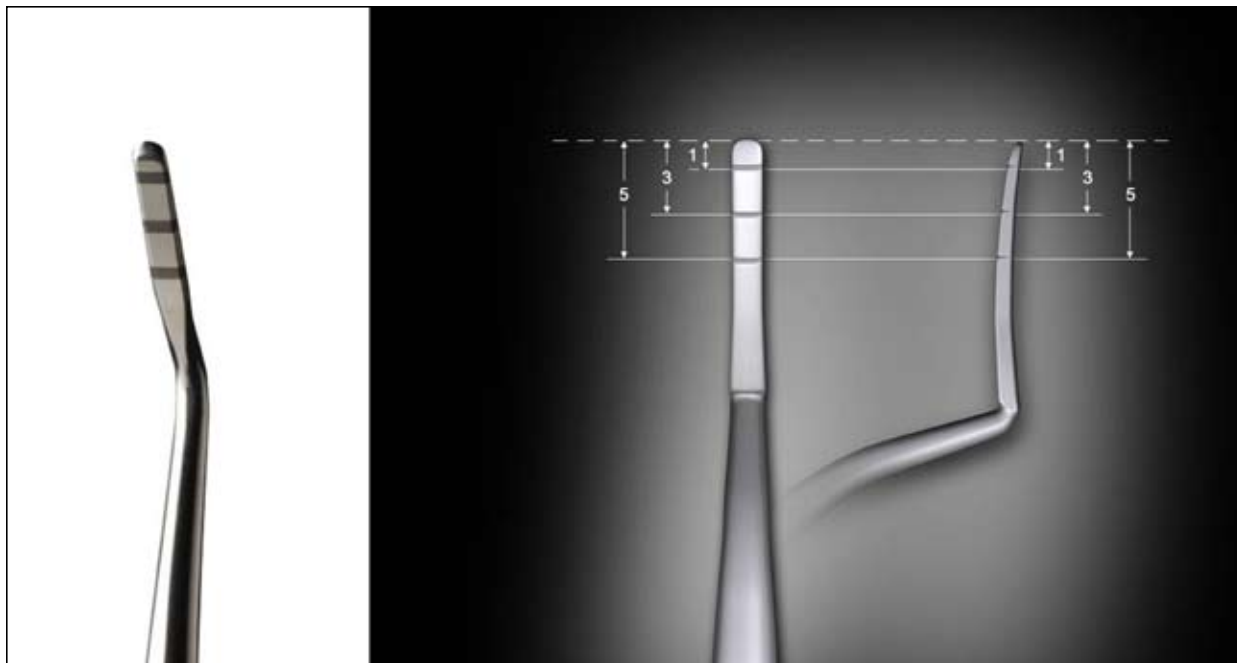


Figure B. The sounding gauge atraumatically pierces the supracrestal gingival fibers. Laser markings define the average sulcus depth (1 mm), mid-facial DGC (3 mm), and interdental DGC (5 mm).

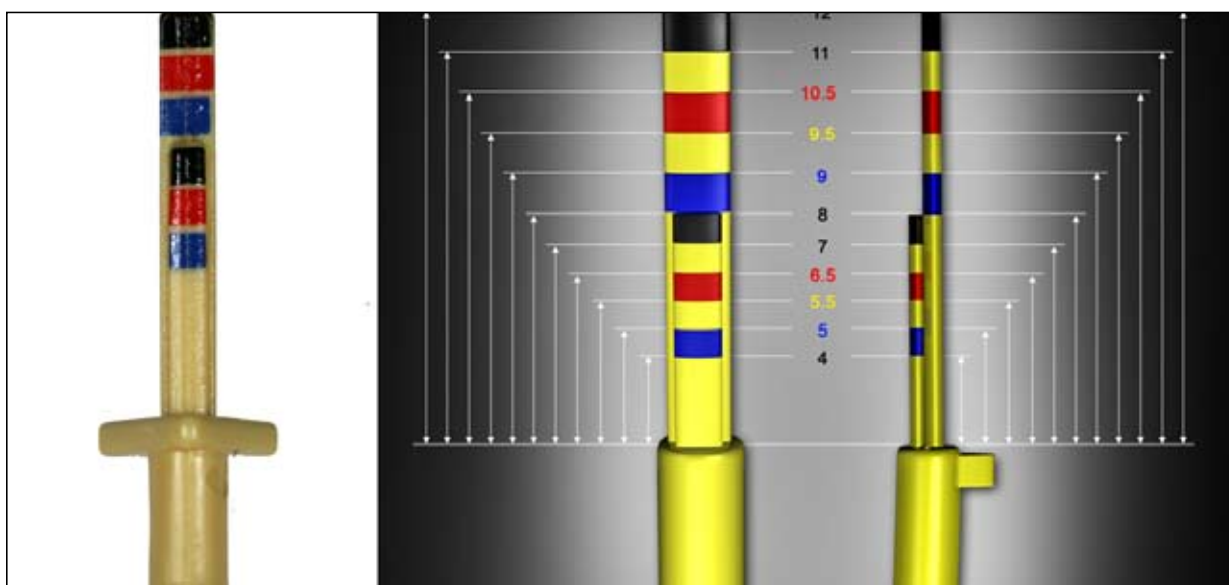


Figure C. Assessment of the interproximal osseous crest using the sounding gauge. The final laser marking denotes 5 mm for the average interdental DGC dimension; this number can vary between 3 mm to 5 mm in health.

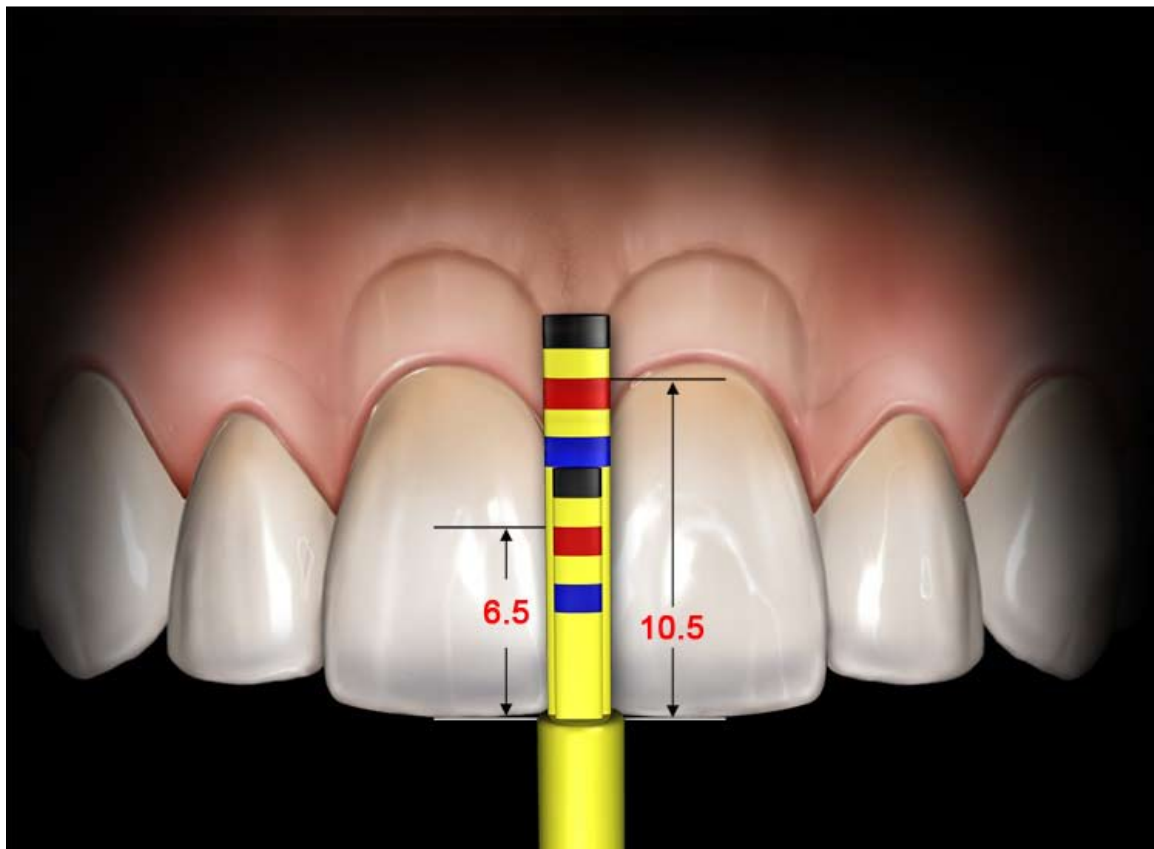


Figure D. The papilla tool is used to access the proper position of the interdentinal papilla measured from the incisal edge position as a function and percentage of the overall tooth length (60%). The osseous crest position is marked at plus 4 mm denoted by the longer outer arm of the gauge.